

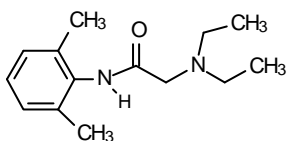
The following is a sample of the types of questions you can expect to see on the Foreign Pharmacy Graduate Equivalency Examination[®] (FPGEE[®]). For more practice questions, take the Pre-FPGEE[®]. The Pre-FPGEE is the only practice examination written and developed by the National Association of Boards of Pharmacy[®]. The Pre-FPGEE is meant to familiarize candidates with the types of questions they may encounter on the FPGEE. The Pre-FPGEE is not intended for use as a study guide. This practice examination will benefit those who are preparing for the FPGEE by exhibiting the types of questions provided on the actual examination as well as providing a score estimate.



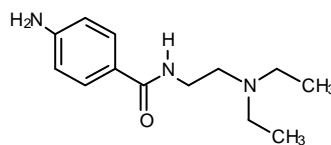
Sample FPGEE Questions

1. What hormone is primarily responsible for the maintenance of a normal plasma calcium level in mammals?
 - A. Glucagon
 - B. Thyroxine
 - C. Calcitonin
 - D. Parathyroid hormone

2. Lidocaine has a longer duration of action than procainamide because it:



Lidocaine



Procainamide

- A. lacks a nucleophilic aniline.
- B. contains a non-hydrolyzable amide.
- C. has more hydrophobic character.
- D. is protected from hydrolysis by ortho methyl groups.

3. An antibiotic's volume of distribution is 12 L, and its elimination rate constant is 0.25/h.
To maintain a steady state plasma concentration of 10 mcg/mL, what should the infusion rate be?
- A. 20 mcg/h
 - B. 40 mcg/h
 - C. 10 mg/h
 - D. 30 mg/h
4. The primary advantage of using insulin lispro over other biotech-produced insulins is:
- A. a more rapid onset.
 - B. fewer immune reactions.
 - C. a lack of pyrogens.
 - D. a more prolonged action.
5. Persons who are becoming socialized into a profession are most likely to change their:
- A. personality traits.
 - B. attitudes.
 - C. religious values.
 - D. parental relationships.
6. The age group that has the highest documented incidence of improper use of medication is composed of individuals:
- A. 65 years of age and older.
 - B. between 30 and 50 years old.
 - C. between 12 and 21 years old.
 - D. under 12 years old.

7. Recent international guidelines recommend that mild, episodic asthma be treated initially with:
- A. inhaled corticosteroids.
 - B. inhaled β_2 -agonists.
 - C. oral theophylline.
 - D. oral corticosteroids.
8. In a patient receiving enteral nutrition via nasogastric tube, which of the following is most helpful in preventing aspiration pneumonia?
- A. Elevating the head of the bed during feeding
 - B. Adding methylene blue to the enteral formula
 - C. Feeding as bolus rather than as continuous infusions
 - D. Administering prophylactic antibiotics

Key to the Sample Questions

1. D
2. D
3. D
4. A
5. B
6. A
7. B
8. A